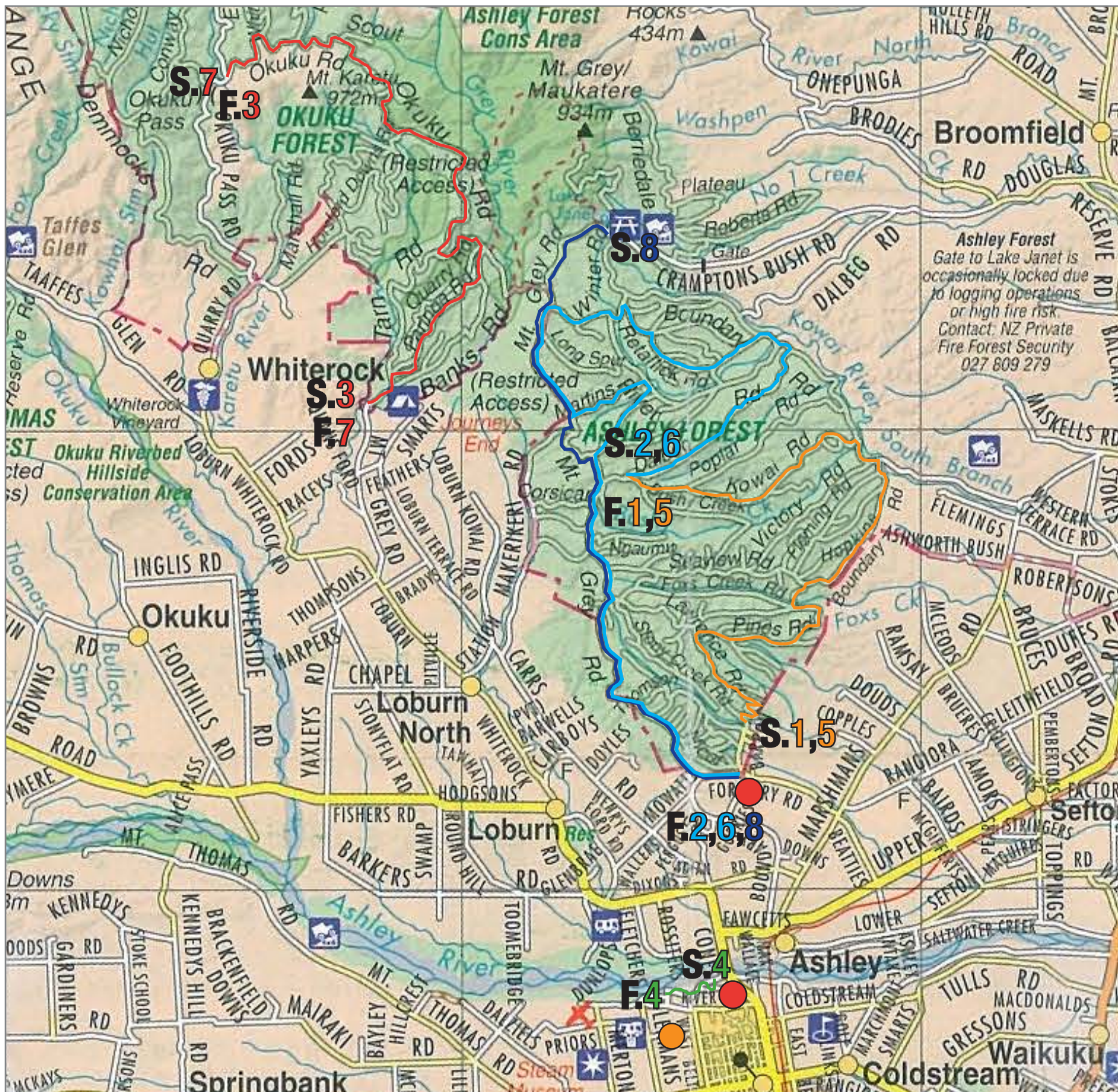


CANTERBURY RALLY 2010

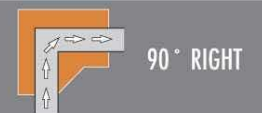
RALLY MAP



STAY SAFE

RALLYING CAN BE DANGEROUS, AND SPECTATORS ARE ADVISED THAT THEY WATCH AT THEIR OWN RISK.

Study these diagrams. The orange areas indicate PROHIBITED AREAS where it could be dangerous to stand. Do not go there as this could cause delays or the cancellation of the stage.



90° RIGHT



90° LEFT



LEFT-HAND BEND



RIGHT-HAND BEND



CROSSROADS



BROW OF A HILL



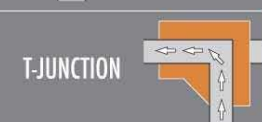
HAIRPIN



CHICANE



FORK



T-JUNCTION

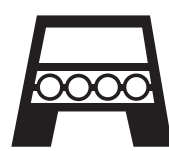
MAP KEY

STAGE

- Stage 1 **ORANGE**
- Stage 2 **LIGHT BLUE**
- Stage 3 **RED**
- Stage 4 **GREEN**
- Stage 5 **ORANGE**
- Stage 6 **LIGHT BLUE**
- Stage 7 **RED**
- Stage 8 **DARK BLUE**

 Spectators Viewing Area

 Service Area At Rangiora Racecourse (Entrance Off Lehmans Road)



PROMOTED BY
Autosport Club Inc.

DO...

- Always obey a marshall
- Stand in a naturally protected area
- Please leave your dog at home
- Understand that a car can crash in a very unpredictable way and place

DO NOT...

- Assume that you can hear a car coming
- Stand on the outside of a corner
- Assume you can make a hasty escape from a car crashing - there's never time!
- Assume that rally cars will arrive at even intervals

